

**Class of 2007  
Employment Report**

**Traditional Program**

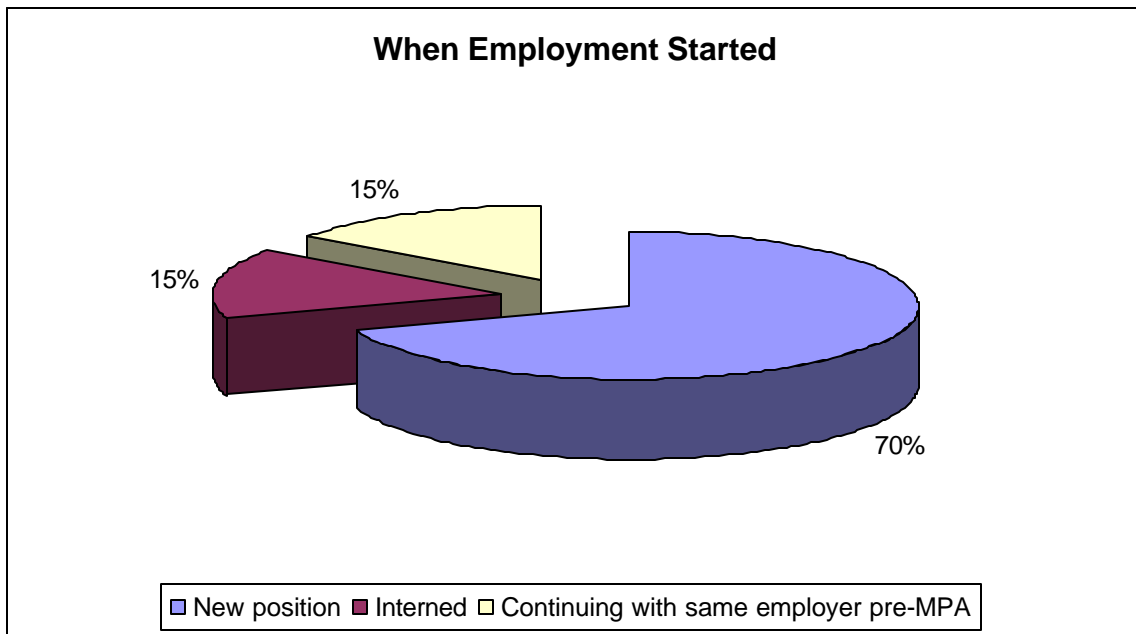
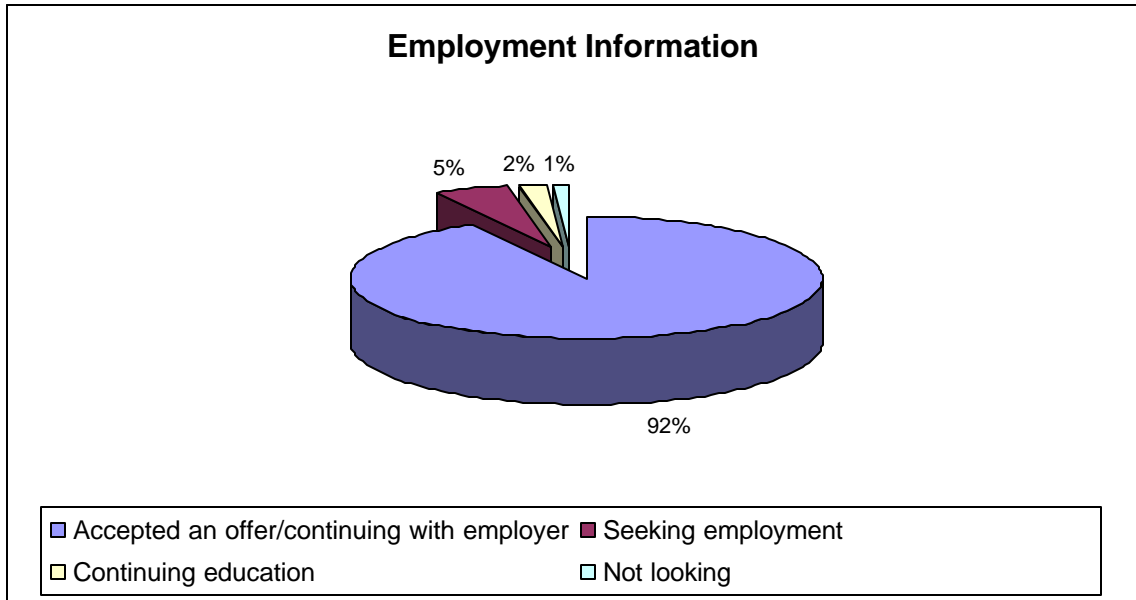
Winter, spring, and summer graduates surveyed 6 months after graduation.

**Graduate Responses:**

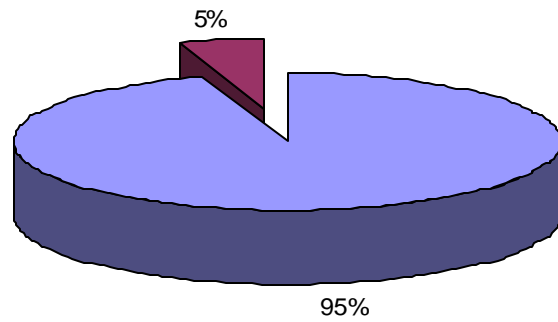
Surveys sent: 93

Surveys received: 86

Response rate: 92%

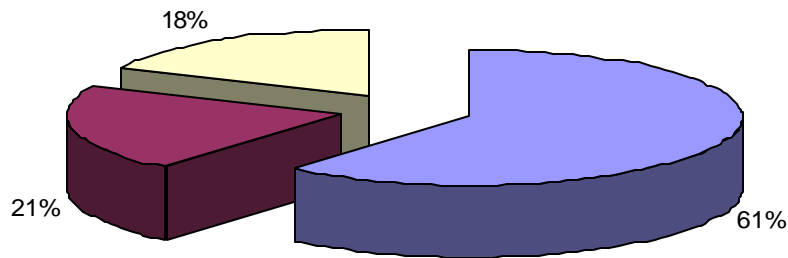


### Length of Job Search (from graduation to start of position)



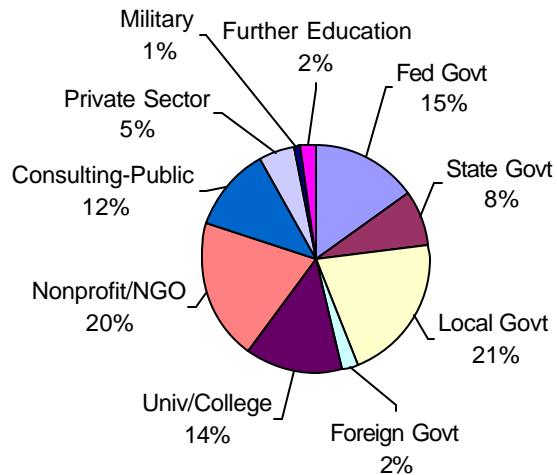
0-3 months 4-6 months

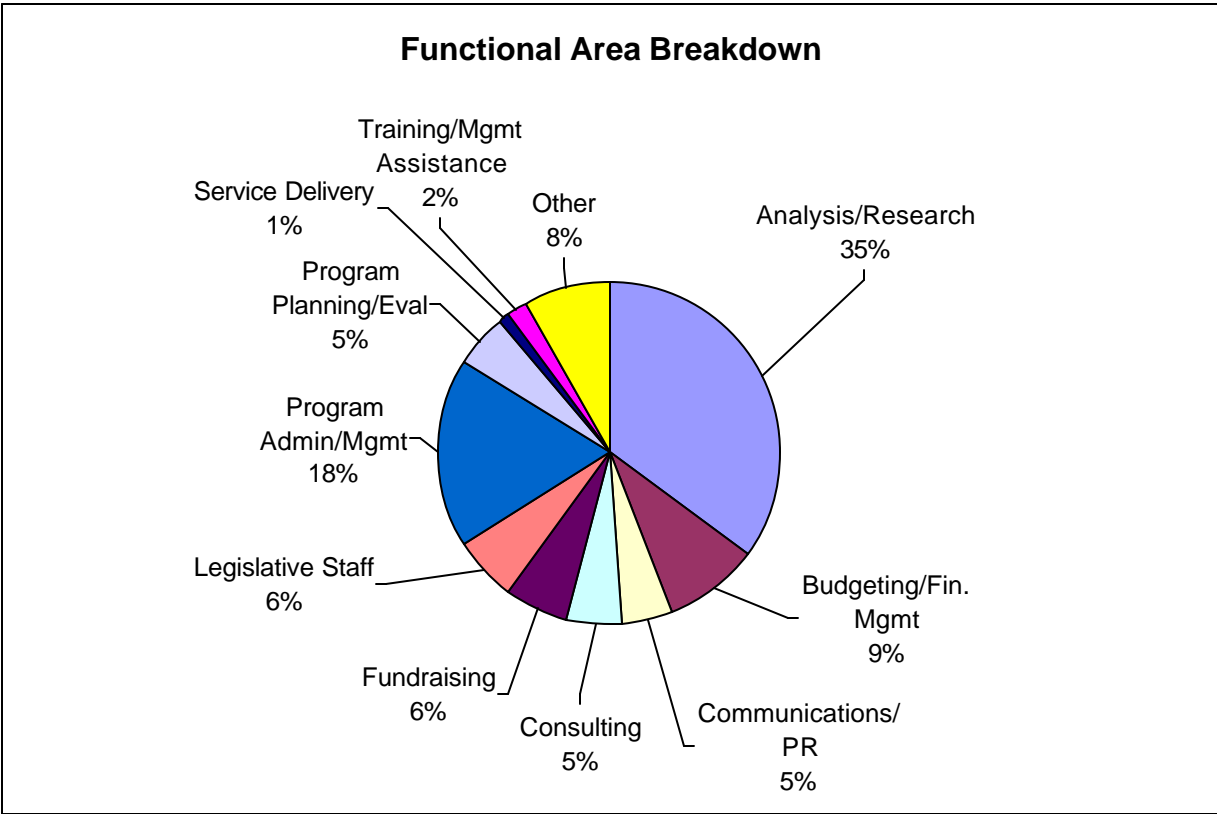
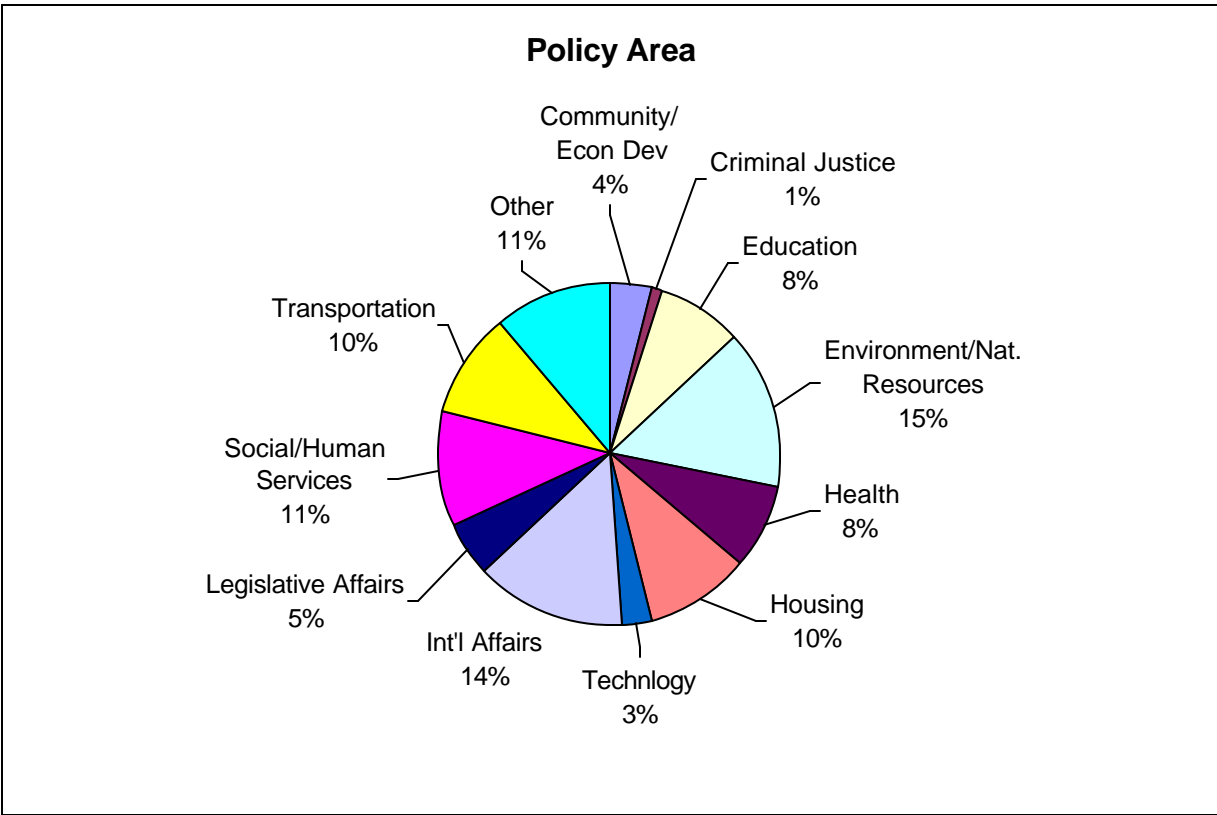
### Overall Sector Distribution



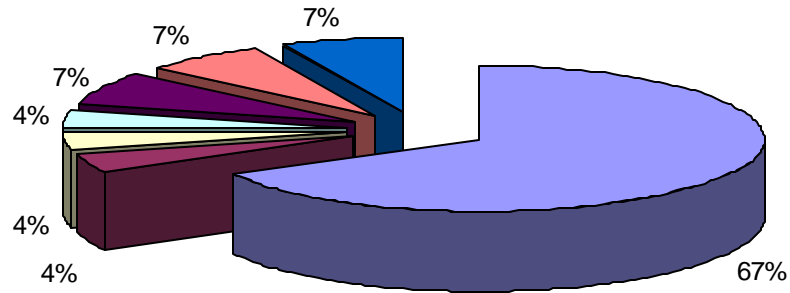
Public Nonprofit Private

### Sector Breakdown





### Geographical Distribution



■ Seattle Metro Area 
 ■ Olympia 
 ■ WA-Other 
 ■ CA 
 ■ DC 
 ■ Other States 
 ■ Int'l

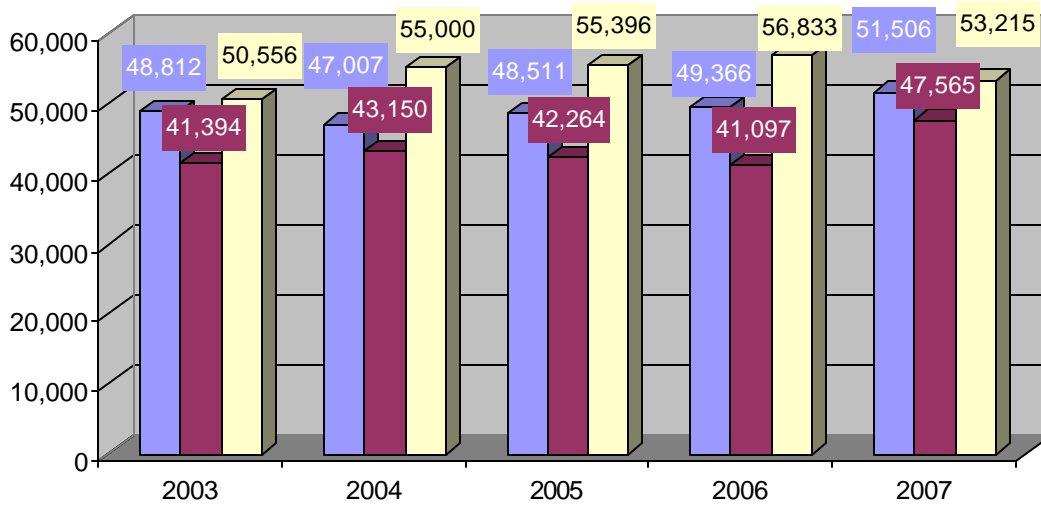
### 2007 Salaries:

**Public Sector:**  
 High: \$104,000  
 Mean: \$51,506  
 Low: \$28,000

**Nonprofit Sector:**  
 High: \$75,000  
 Mean: \$47,565  
 Low: \$32,000

**Private Sector:**  
 High: \$80,000  
 Mean: \$53,215  
 Low: \$35,000

### Sector Salary Comparison (2003-2007)



■ Public Sector 
 ■ Nonprofit Sector 
 ■ Private Sector

## Organizations/Agencies by Sector

### Federal Government

- U.S. Agency for International Development: Presidential Management Fellow (DC)
- U.S. Department of Labor
- U.S. Department of Veteran's Affairs (WA / CA)\*
- U.S. Environmental Protection Agency
- U.S. Environmental Protection Agency (DC)
- U.S. Forest Service (DC)
- U.S. Government Accountability Office\*
- U.S. Senator Maria Cantwell (Spokane, WA)

### State Government

- CA Bureau of State Auditors (Sacramento, CA)
- WA State Department of Community, Trade and Economic Development (Olympia)
- WA State Department of Transportation
- WA State Health Care Authority
- WA State House of Representatives (Olympia)\*

### Local Government

- Atlanta Housing Authority (GA)
- Chittenden County Solid Waste District (VT)
- City of Redmond
- City of Seattle, City Council
- City of Seattle, Department of Finance
- City of Seattle, Human Services
- City of Seattle, Mayor's Office
- City of Seattle, Seattle Municipal Court
- City of Seattle, Seattle Public Utilities
- Housing Authority of Snohomish County
- King County Department of Transportation
- King County Housing Authority
- King County Metro, Market Development
- King County Office of Management and Budget
- Prince George County (MD)
- Snohomish County Public Utility District
- Tacoma Housing Authority

### Foreign Government

- Hsin-Chu County Police Department
- Japan Ministry of Economy, Trade, and Industry

### University/College

- Bjerknæs Centre for Climate Change (Norway)
- Syracuse University (NY)
- University of Washington (UW)
- UW, Center for Reinventing Public Education\*
- UW, Evans School\*
- UW, International Outreach Programs Department
- UW, International Training & Education Center on HIV

- UW School of Social Work, Center for Women's Welfare
- Washington State University, Clark County Extension (Vancouver, WA)

### **Nonprofit/NGO**

- Bill and Melinda Gates Foundation
- Cascade Land Conservancy
- Casey Family Programs
- Children's Alliance
- Grameen Foundation
- Grupo de Informacion en Reproduccion Elegida (Mexico)
- International Community Health Services Foundation
- International Organisation for Migration, Mission in Ukraine (Kiev, Ukraine)
- PATH\*
- Performing Arts Center Eastside (PACE)
- Rainforest Alliance (Costa Rica)
- SEIU Local 925
- Stockholm Environment Institute
- VillageReach
- Washington State Budget and Policy Center

### **Consulting – Public Sector/Nonprofit Clients**

- Beacon Development Group
- Booz Allen Hamilton (DC)
- Bryant Christie
- Citi Community Capital (IL)
- Edelman
- Flexcar
- Global CSR (CA)
- Navigant Consulting
- Ross and Associates
- Solutions for Progress (PA)

### **Private Sector**

- Honest Tea (DC)
- Horizon Air
- Inviso
- Woods and Associates

### **Military**

- U.S. Air Force (TX)

### **Continuing Education**

- UW – Information Sciences PhD
- UW – Economics PhD

\*Denotes more than one alum employed there.

Last updated: February 14, 2008